



## Top 2000 TBI 7W (S, L)

Water cooling

Screw-on gas nozzles

Uses same consumables as TBI 411/ 511

### Technical data

#### MIG/MAG (GMAW) Semi-automatic welding torch TBI 7W-S/7W-L

Rating at 100% duty cycle  
(10 min. cycle)

- Mixed gas: 400 A (TBI 7W-L: 450 A)  
- CO<sub>2</sub>: 450 A (TBI 7W-L: 500 A)

Cooling method Water cooling

Wire diameter 1.0 - 1.6 mm

Gas flow 15 l/min

Technical specification according to IEC 60974-7

Weight with 1.5m cable 1.60 kg

Connection Euro-Central connector  
other connectors are available  
upon request.

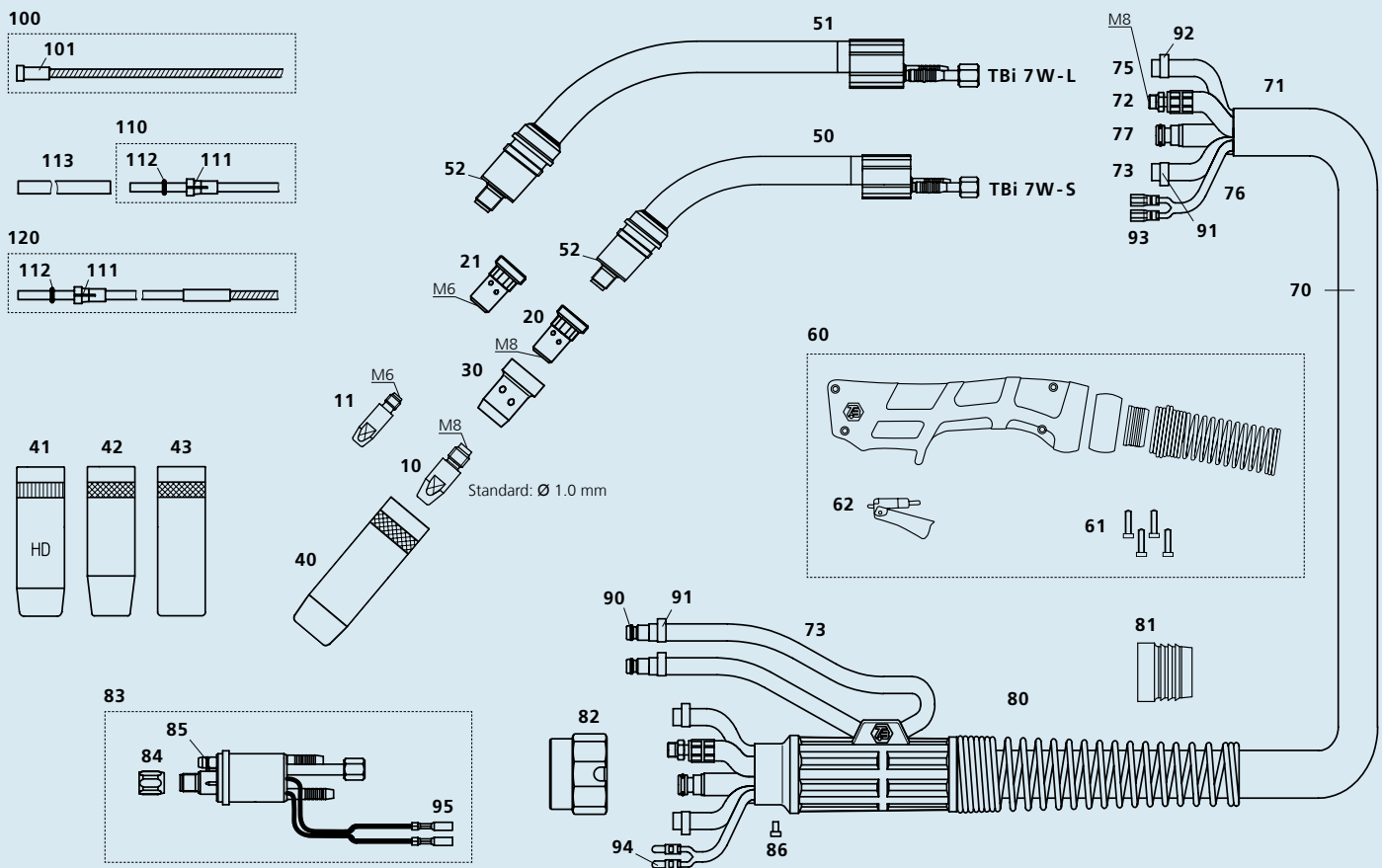
Torch rating will be reduced when using pulsed-arc power sources.  
Special torch necks and custom lengths of the cable assembly are  
available upon request.

### Ordering Information

TBi 7W-S ESW, 50° bent 174PK425\_0\*

TBi 7W-L ESW, 50° bent 174PL425\_0\*

\* At the blank, please insert 3, 4 or 5 for a torch length of 3, 4 or 5 m.



Pos. Description

Part no.

Pos. Description

Part no.

### Contact tips

▶ <b>10</b>	<b>Contact tip M8x30, Ecu</b>	<b>340P_1262*</b>
10	Contact tip M8x30, CuCrZr	340P_3262*
10	Contact tip M8x30 Alu, Ecu	341P_1262*
11	Contact tip M6x28, Ecu	340P_1069*
11	Contact tip M6x28, CuCrZr	340P_3069*
11	Contact tip M6x28 Alu, Ecu	341P_1069*

### Tip holders

▶ <b>20</b>	<b>Tip holder M8 / L=25 mm</b>	<b>342P008033</b>
20	Tip holder CuCrZr M8 / L=25 mm	342P008171
20	Tip holder M8 / L=29 mm	342P008133
21	Tip holder M6 / L=25 mm	342P006033
21	Tip holder M6 / L=29 mm	342P006133

### Gas diffusers

▶ <b>30</b>	<b>Gas diffuser, black</b>	<b>130P002026</b>
30	Gas diffuser, ceramic	130P002019

### Gas nozzles

▶ <b>40</b>	<b>Nozzle conical diam. 16 mm</b>	<b>345P022171</b>
41	Nozzle conical diam. 16 mm HD	345P022271
42	Nozzle conical diam. 14 mm	345P023171
43	Nozzle cylindrical diam. 19 mm	345P021171

### Spare parts

50	Torch neck TBi 7W-S (short), 50°	174P101005
51	Torch neck TBi 7W-L (long), 50°	174P101006
52	Insulating washer	130P002004
60	Handle blue, watercooled, cpl. kit	380P220401
61	Cross recessed screw M3.5x14	100P008413

▶ = Standard equipment

\* At the blank, please insert suitable information for torch length or wire diameter, e.g. 08 for 0.8 mm or 3 for 3 m.

62	Trigger, red, 2 poles	385P021016
70	Cable assembly TBi Top 2000, 2-C	171P4B45_0*
71	Fabric outer cover 25x1.5 mm, cpl.	307P2528_A*
72	Water-power cable Top 2000, blue, 2-C	316P1622_0*
73	Water hose 2-C, black, 5x1.5 mm	303P070000
75	PVC-Gas hose, black 4.5x1.5 mm	302P010000
76	Control cable x.30 m cpl.	301P2304_0*
77	Wire conduit yellow (Top 2000)	356P0C0C_0*
80	Cable support 3 parts cpl. with spring	701P101071
81	Clamping ring for outer cover	600P102201
82	Adaptor nut	701P001013
83	Central adaptor ESW cpl., moveable pins (Top 2000)	701P101006
84	Sleeve nut M10x1	701P002005
85	O-ring 4.0x1.0 mm (gas nipple)	365P100040
86	Slotted screw M4x6	100P008401
90	Quick connector	701P002064
91	Hose clamp Ø 9.5 with ring	373P100095
92	Hose clamp Ø 8.7	371P000087
93	Cable lug, flat	375P000023
94	Insulated connector, male, round	375P000004
95	Insulated connector, female, round	375P000003

### Wire guides

▶ <b>100</b>	<b>Liner w/o insulation (x.40 m) for wire 1.0-1.2</b>	<b>322P2045_4*</b>
100	Liner w/o insulation (x.40 m) for wire 1.4-1.6	322P2545_4*
101	Collet for liners diam. 4.5 mm	330P025045
110	PTFE-liner red (x.50 m) for wire 1.0-1.2	326P2040_5*
110	PTFE-liner yellow (x.50 m) for wire 1.2-1.6	326P2747_5*
111	Collet for liners 2.0x4.0 mm	331P020040
111	Collet for liners 2.7x4.7 mm	331P027047
112	O-ring 3.50x1.50 mm (for liner)	365P150035
113	Support tube 5x4.4 mm, L=150 mm	329P544150
120	PA-Alu wire guide (x.50 m) for wire 1.0-1.2	328P2040_A*
120	PA-Alu wire guide (x.50 m) for wire 1.2-1.6	328P2347_A*
120	PA-Alu wire guide (x.50 m) for wire 2.0-2.4	328P2947_A*